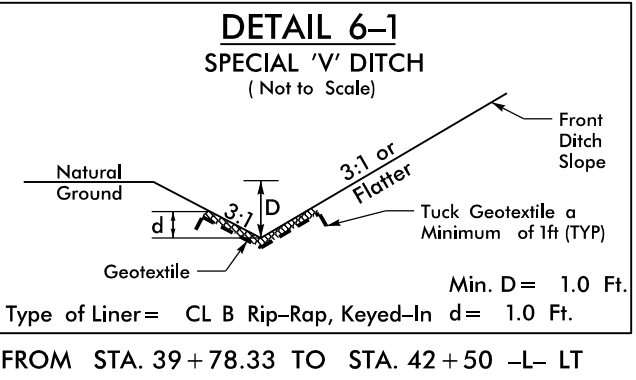


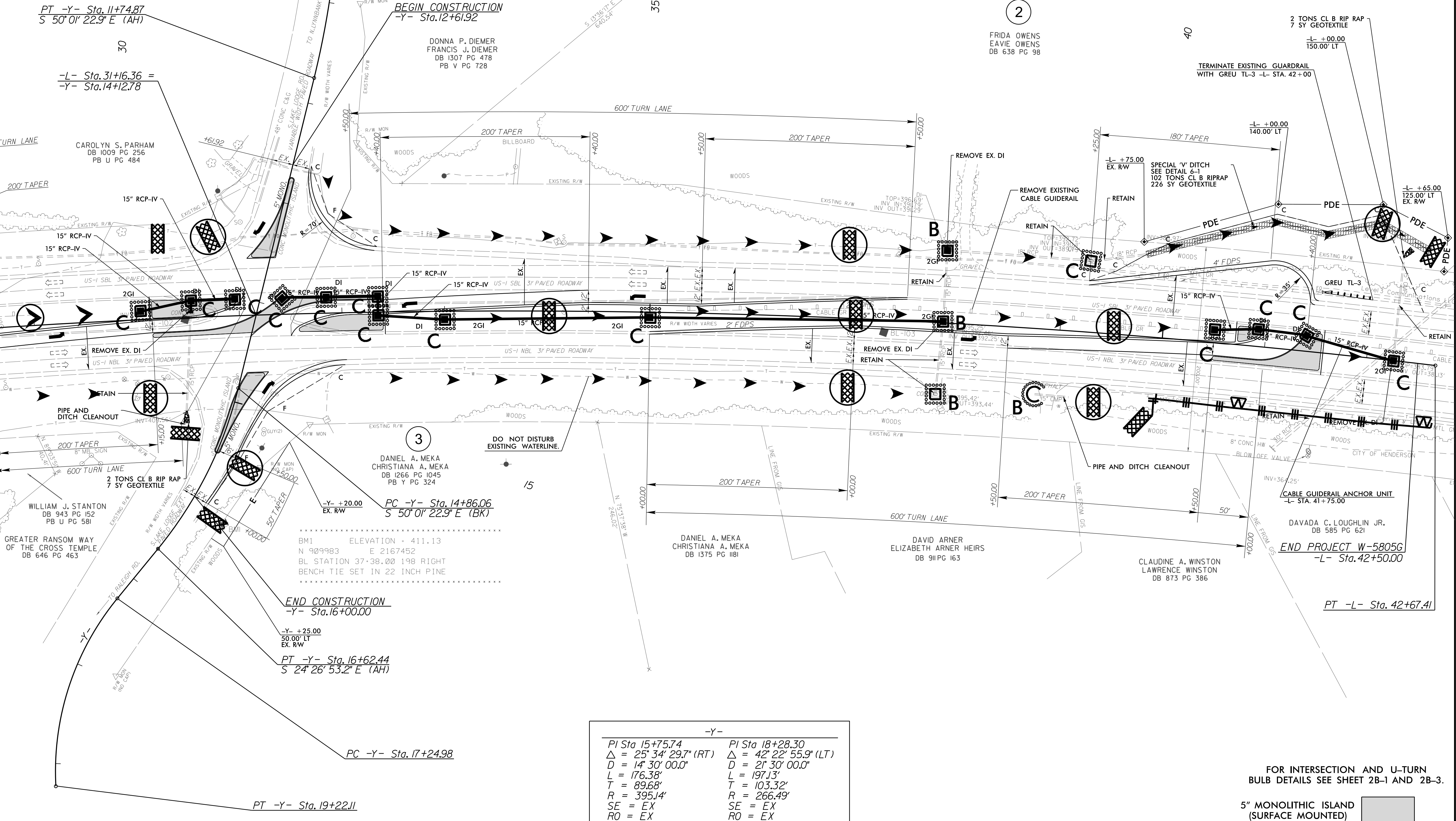
8/17/99

PROJECT REFERENCE NO.		SHEET NO.	
W-5805G		EC-9/CONST.6	
RW SHEET NO.			
ROADWAY DESIGN ENGINEER	HYDRAULICS ENGINEER		
DOCUMENT NOT CONSIDERED FINAL UNLESS ALL SIGNATURES COMPLETED			
Prepared in the Office of:		NC FIRM LICENSE No. P-0339 320 Executive Ct., Hillsborough, NC 27278 (919) 732-3883 (919) 732-6676 (FAX)	

-L-	-Y-
PI Sta 31+06.43	PI Sta 10+87.72
$\Delta = 17^{\circ} 31' 22.7''$ (RT)	$\Delta = 11^{\circ} 21' 59.6''$ (RT)
D = 0' 44' 55.4"	D = 6' 30' 00.0"
L = 2,340.37'	L = 174.87'
T = 1,179.39'	T = 87.72'
R = 7,652.44'	R = 881.47'
SE = EX	SE = EX
RO = EX	RO = EX



MATCHLINE -L- Sta. 28+50.00
(SEE SHEET 5)



-Y-	-Y-
PI Sta 15+75.74	PI Sta 18+28.30
$\Delta = 25^{\circ} 34' 29.7''$ (RT)	$\Delta = 42^{\circ} 22' 55.9''$ (LT)
D = 14' 30' 00.0"	D = 21' 30' 00.0"
L = 176.38'	L = 197.13'
T = 89.68'	T = 103.32'
R = 395.14'	R = 266.49'
SE = EX	SE = EX
RO = EX	RO = EX

FOR INTERSECTION AND U-TURN
BULB DETAILS SEE SHEET 2B-1 AND 2B-3.

5" MONOLITHIC ISLAND
(SURFACE MOUNTED)

03-APR-2025 08:29
W-5805G-EC.psh-3.dgn
cbe:zack